



STEP BY STEP

Libby and your Student OneCard



YOU WILL NEED:

- Your Student OneCard
- A Chromebook, Laptop, or Smartphone



WHAT IS A STUDENT ONECARD



Student OneCard is a digital library account that allows you to access library books and online tools

Students are able to use their Student ID Numbers as Sonoma County Library account numbers

SIGNING-IN



You will need to know your:

- School District prefix
- Your Student ID
- Your 4-Digit Pin

Account Number Examples:

SRCS123456

Pin Example:

(Year of Birth) 2006 OR 2012

OR

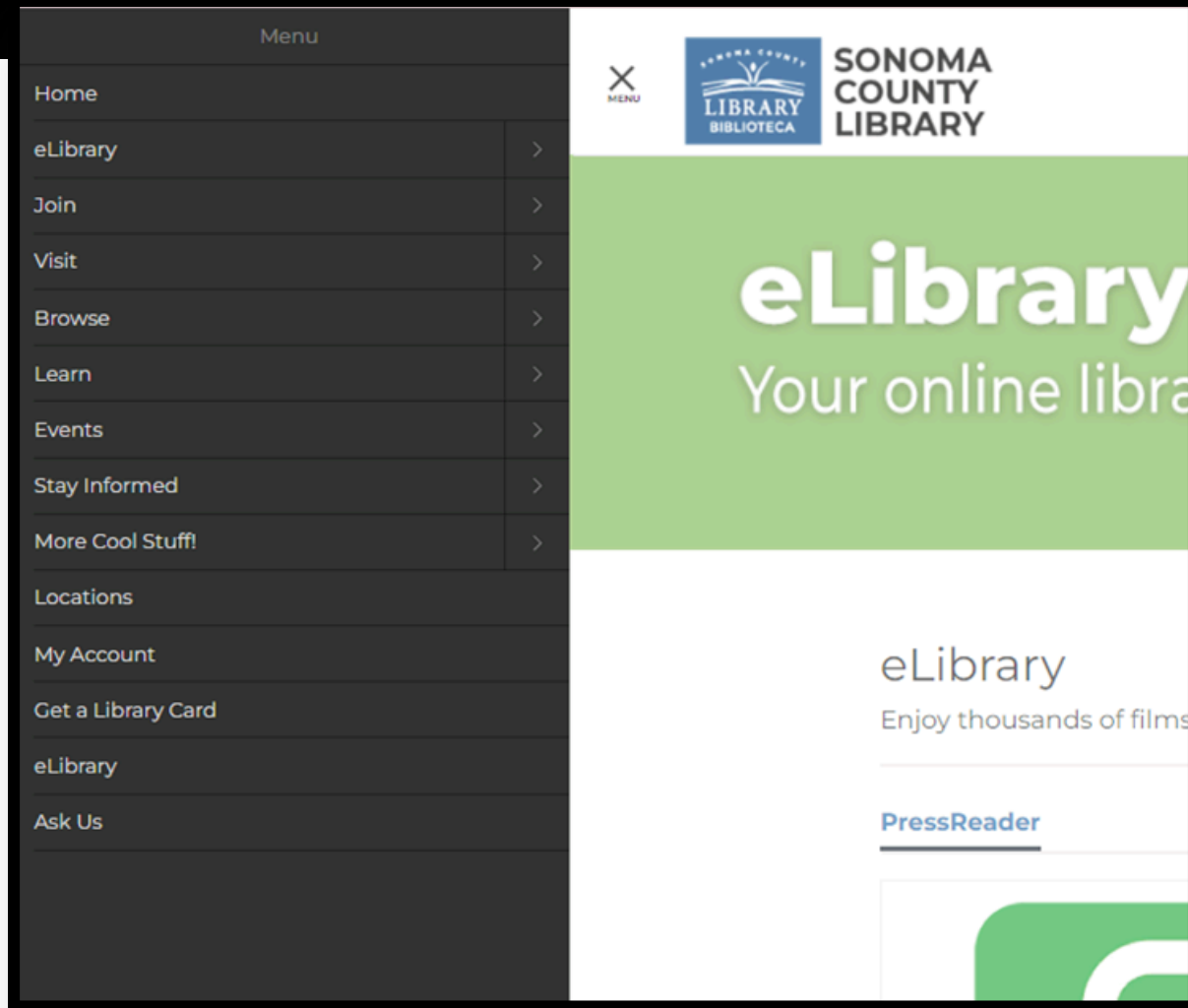
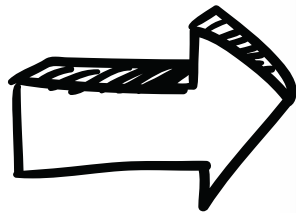
(DDMM) 0113 OR 1225



Call any **Sonoma County** Library Location for help using your Student OneCard.

STEP 1

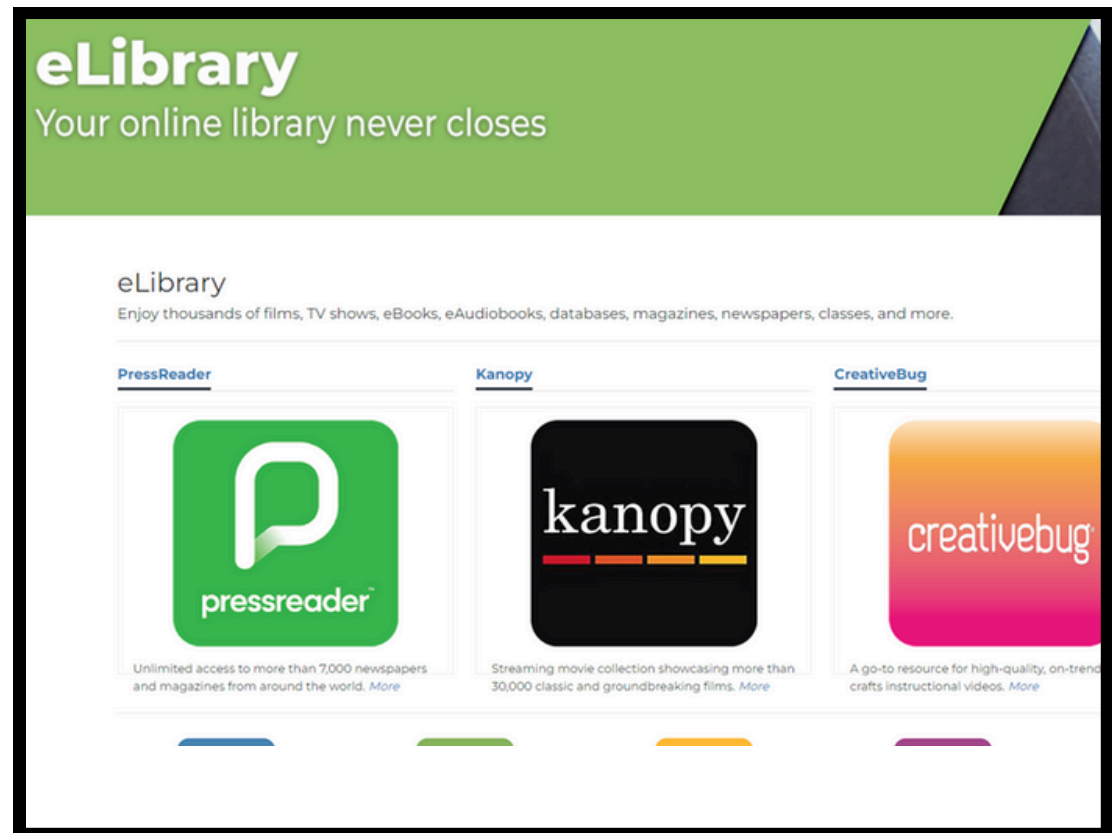
Find the eLibrary link in our main menu



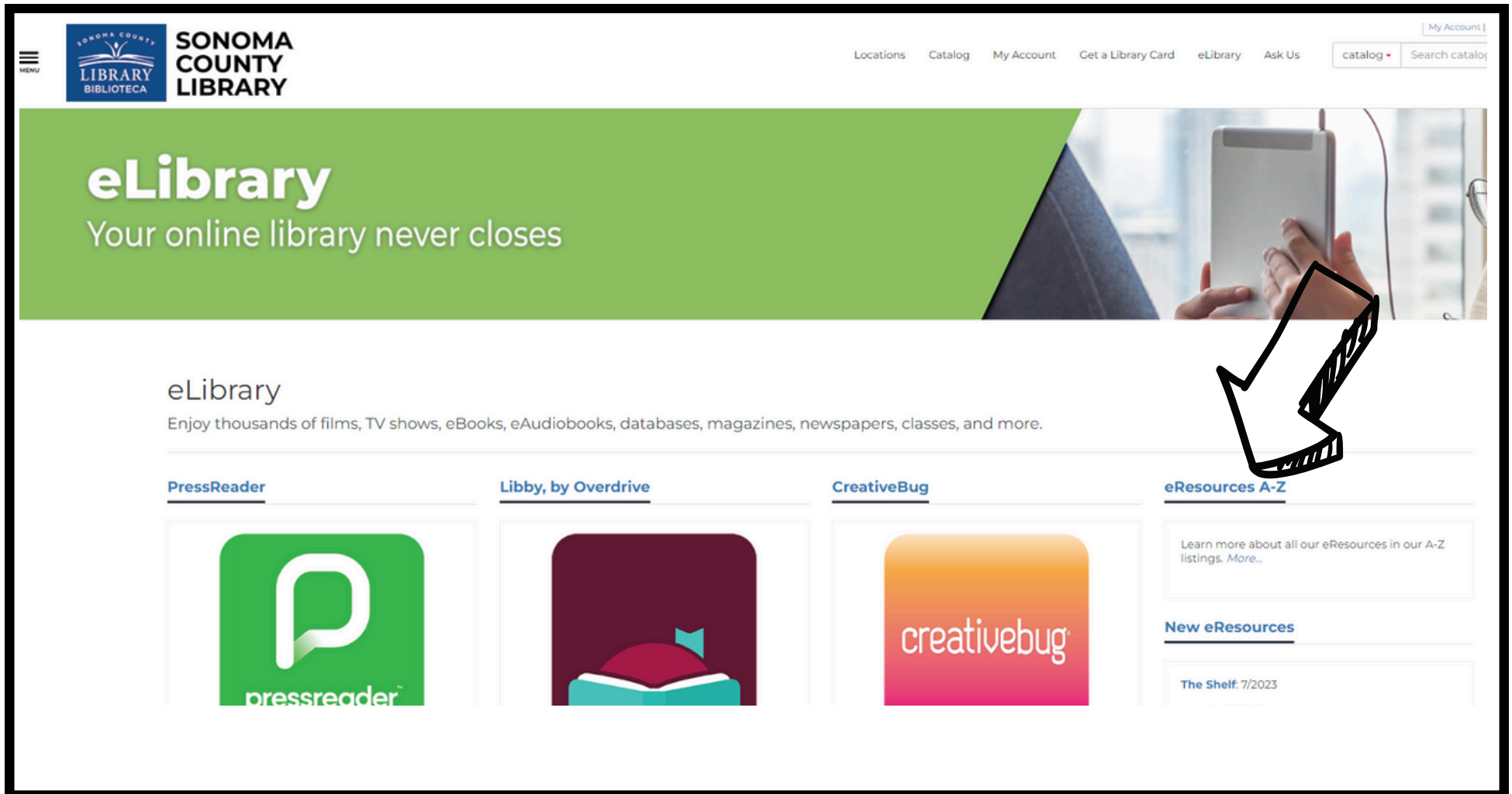
sonomalibrary.org

WHAT'S THAT?

eLibrary is where you find the
A-Z list of eResources as well as links to:
pressreader
kanopy
creativebug
and more...



STEP 2



Click the **eResources A-Z**.

STEP 3

L

Learning Express

Nearly 1,000 online tutorials, practice tests, and eBooks to improve skills required for academic and career success. [More](#)

Legal Information Reference Center

Full text and complete forms from Nolo Press books, written by lawyers for consumers and small business. [More](#)

Libby, by OverDrive

Borrow and download eBooks, eAudiobooks, eMagazines and comics. [More](#)

Libby Magazines, by OverDrive

Borrow and download unlimited magazines, from over 3,000 titles. [More](#)

LinkedIn Learning

Courses and tutorials taught by industry experts in various skill areas. [More](#)

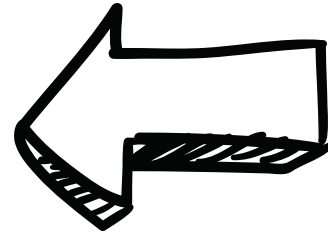
LinkedIn Learning Blog

Free courses to anyone who doesn't have a LinkedIn account. Free for job seekers, educators, remote workers and more.

Local History Index

Research Sonoma County people, places, events, books, journals and newspapers found prior to 1900 in the Sonoma County and Genealogy Library. [More](#)

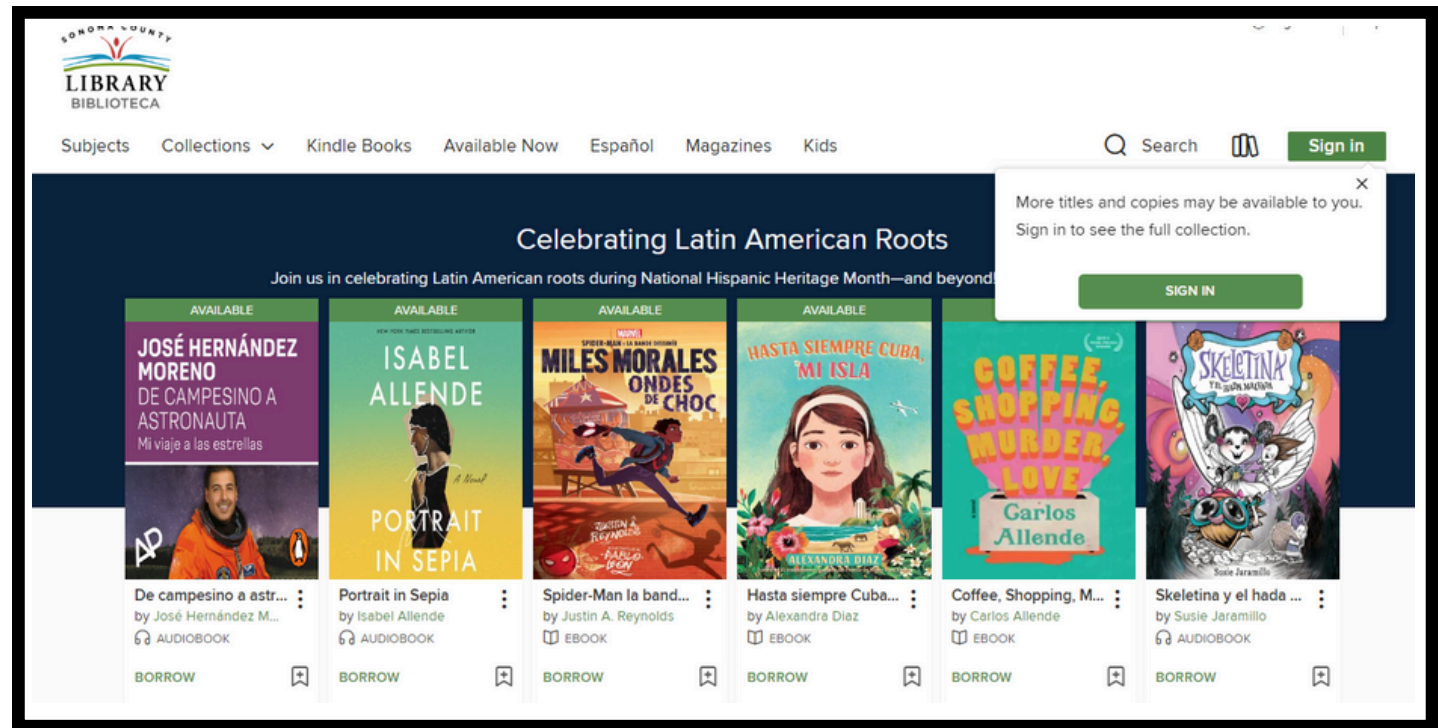
LUNA Commons



Scroll down. Libby, by Overdrive is listed alphabetically. Click on Libby, by Overdrive.

STEP 4

Click
Sign In to
begin.



STEP 5

Select **Sonoma County Library** for your library. Enter your **Student OneCard** or Library card number, as well as your four digit pin number.



Welcome!

Please sign in below to borrow content.

Select your library

Sonoma County Library



Card Number

[Card Number help](#)

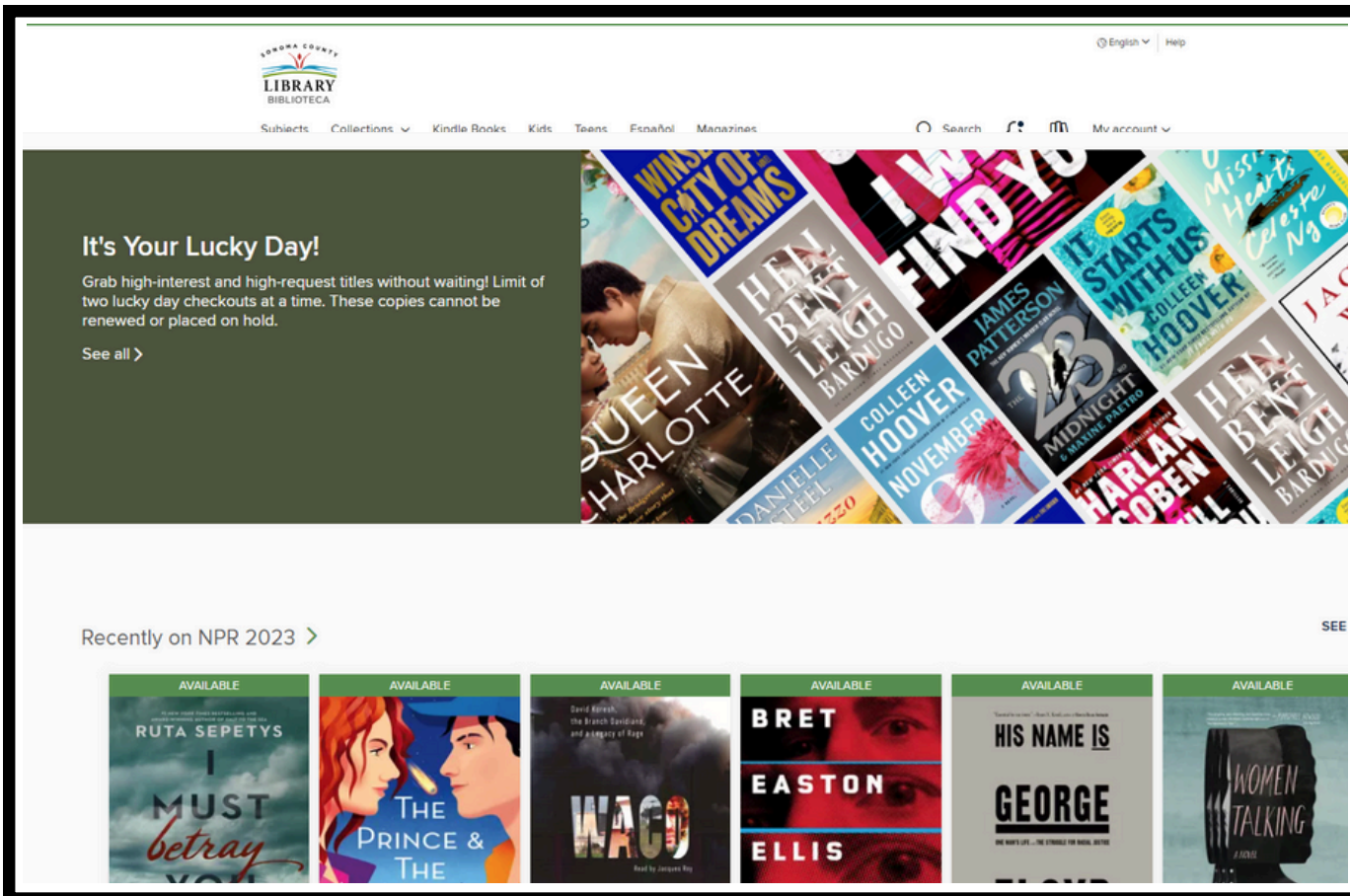
PIN



[PIN help](#)

Sign in

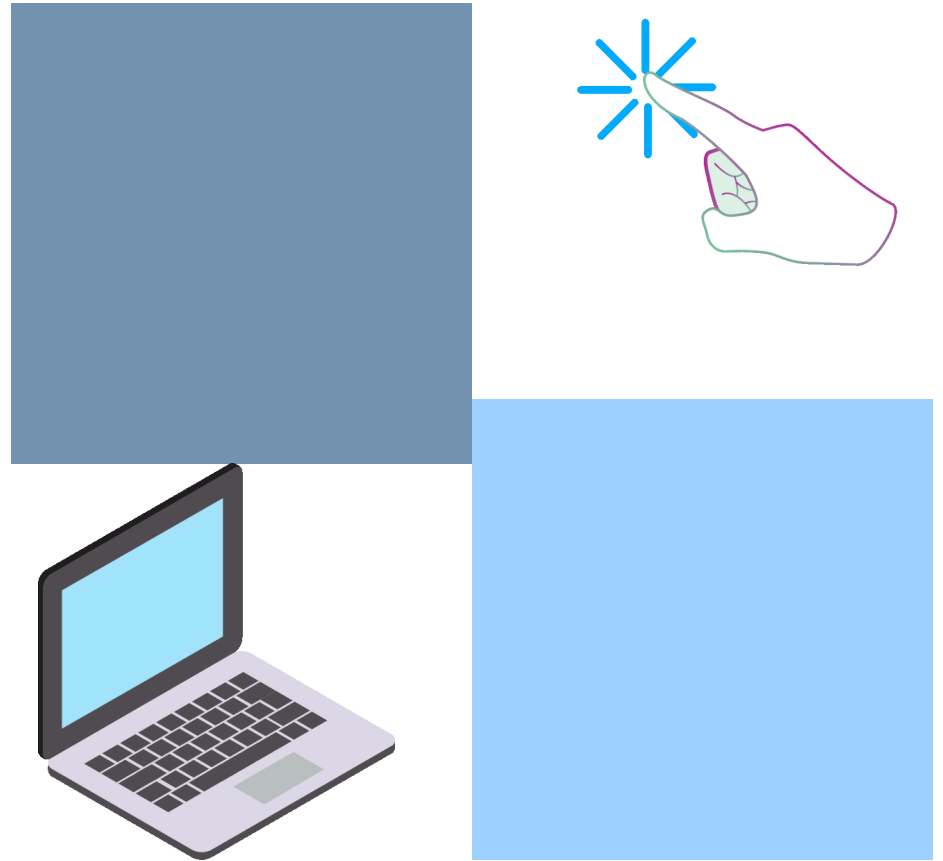
STEP 6



Welcome to Libby by Overdrive! Here you will find eBooks, eAudio books, Magazines, and more.

STEP 7

Make using
 Libby.
a habit!



THANK YOU



- Bookmark
- Follow
- Subscribe
- Marque
- Siga
- Suscríbese



You Tube sonomalibrary

Your Library at Home | *Su Biblioteca en Casa*

SONOMA COUNTY

LIBRARY
BIBLIOTECA