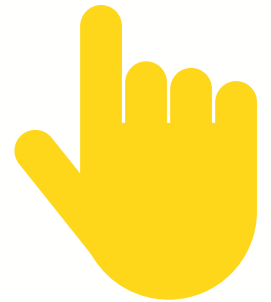




**STEP BY STEP**

# **NoveList K-8 Plus and your Student OneCard**



 **NoveList**  
K-8 Plus

# YOU WILL NEED:

- Your Student OneCard account number
- A Chromebook, Laptop, or Smartphone



# WHAT IS A STUDENT ONECARD



Student OneCard is a digital library account that allows you to access library books and online tools.

Students are able to use their Student ID Numbers as Sonoma County Library account numbers.

# SIGNING-IN



You will need to know your:

- School District prefix
- Your Student ID
- Your 4-Digit Pin

**Account Number Examples:**

SRCS123456

RVUSD123456

**Pin Example:**

(Year of Birth) 2006 OR 2012

OR

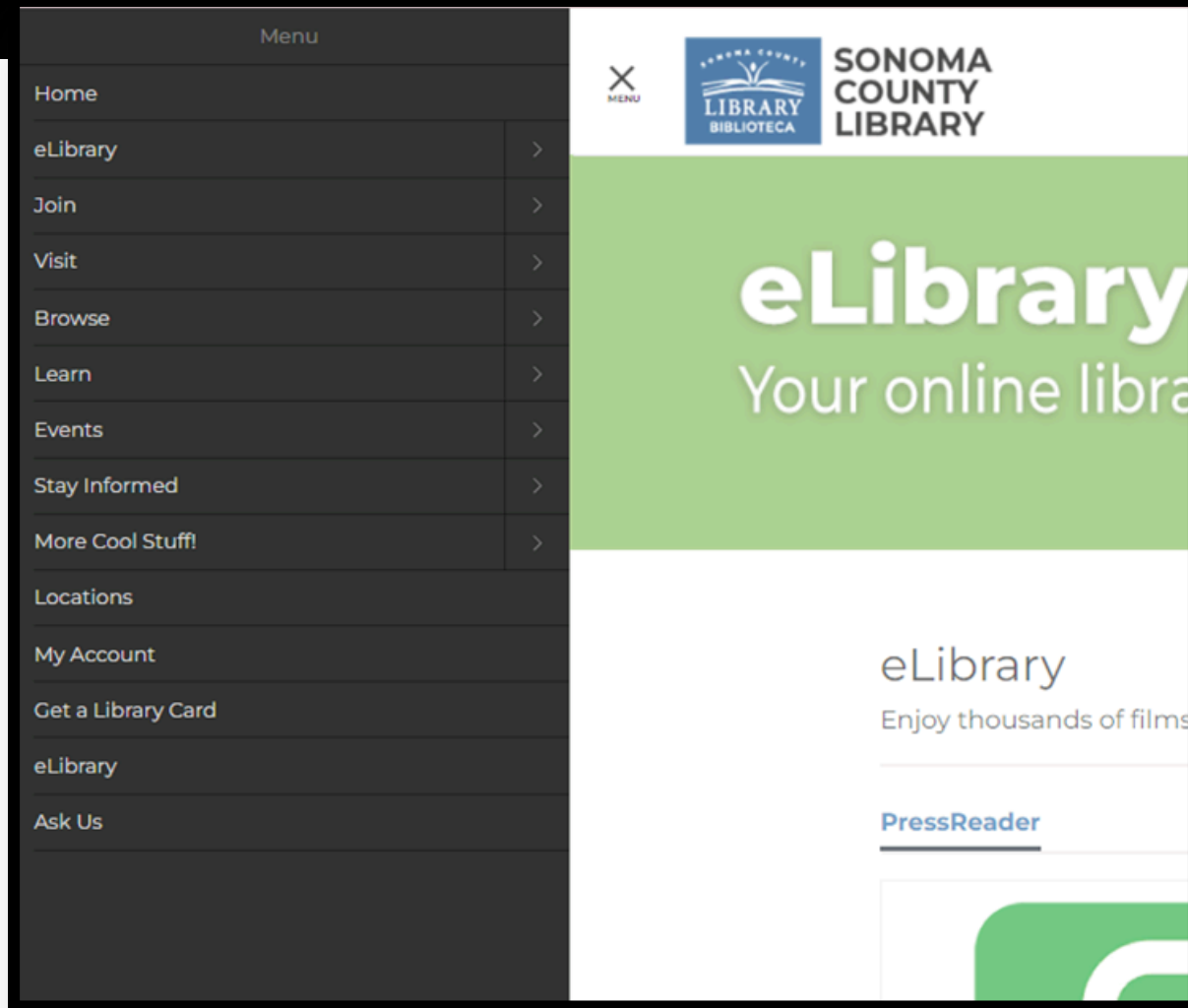
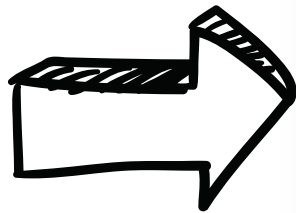
(RVUSD MMDD) 0312 OR 1211



Call any Sonoma County Library Location for help using your Student OneCard.

# STEP 1

Find the eLibrary link in our main menu.



[sonomalibrary.org](http://sonomalibrary.org)

# STEP 2

N

## National Geographic Archives 1888-2015

Magazines issues, images and maps produced by National Geographic from 1888 to 2015. [More](#)

## National Geographic Kids

Books, videos, magazines and pictures produced by National Geographic for children. [More](#)

## The New York Times - At Library Access

Free access to unlimited New York Times articles and content for Sonoma County Library cardholders while using library computers or WiFi. [More](#)

## The New York Times - Remote Access

72-hour remote pass to New York Times articles and content. [More](#)

## Nextreads

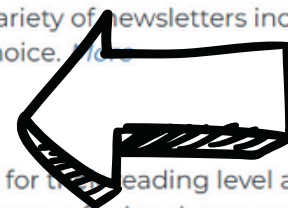
Choose to receive a variety of newsletters including lists of new titles on the subject of your choice. [More](#)

## NoveList K-8 Plus

Helps kids find books for their reading level and interests. Parents, teachers, and librarians can find tools to teach with books and engage young readers. [More](#)

## NoveList Plus

Allows readers to use a favorite author or title as a template to locate other authors and titles of interest. [More](#)



NoveList K-8 Plus is listed alphabetically. Click on NoveList K-8 Plus.

# STEP 3

You will be prompted to enter your **library card number**, **Student OneCard number**, or **eCard number**.

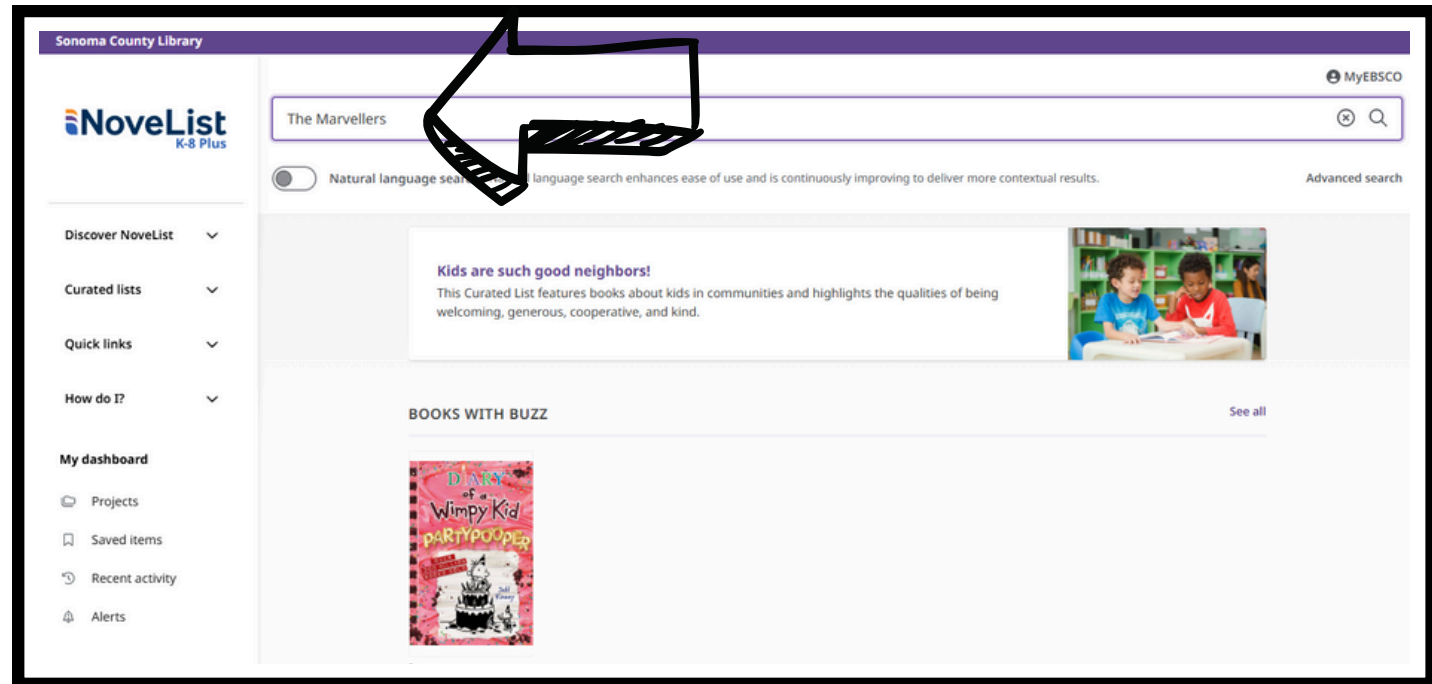


Your library card number (with no spaces) -  
El número de su carné de la biblioteca (sin  
espacios):

Login

# STEP 4

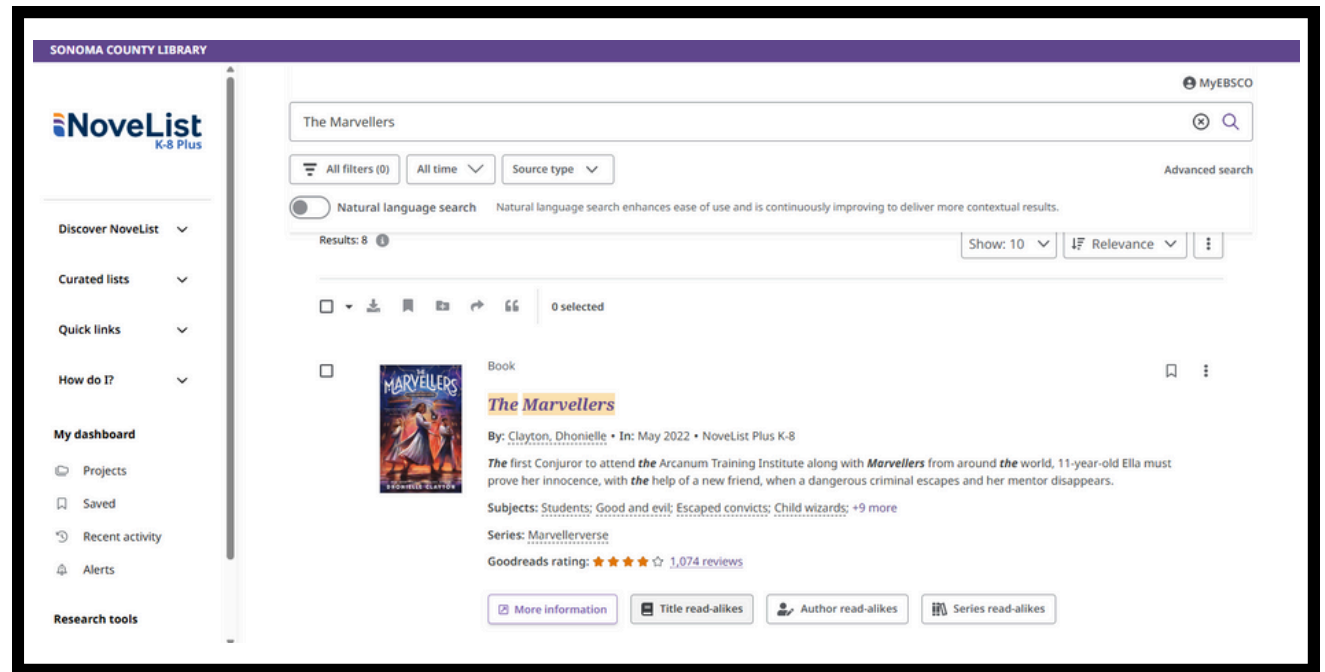
You're in!  
Search for a  
favorite  
author,  
genre, or  
series to  
find your  
next read.





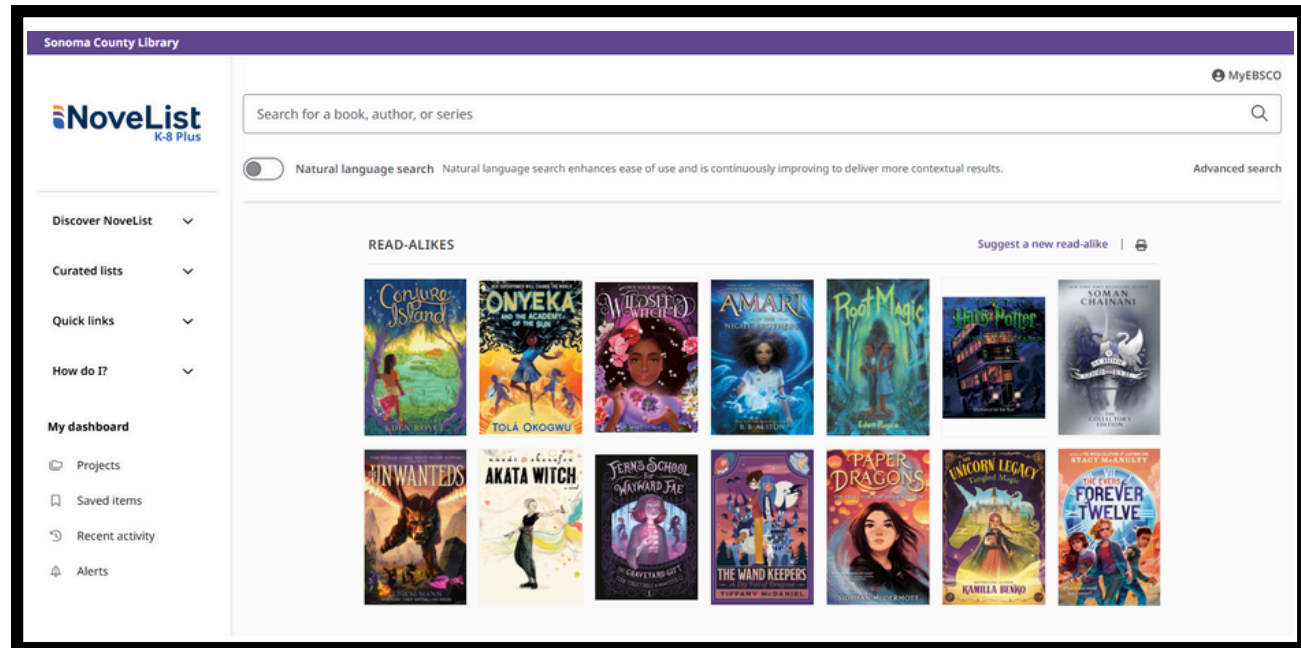
# STEP 5

Choose from title, author, or series read-alikes to get suggestions for similar books.



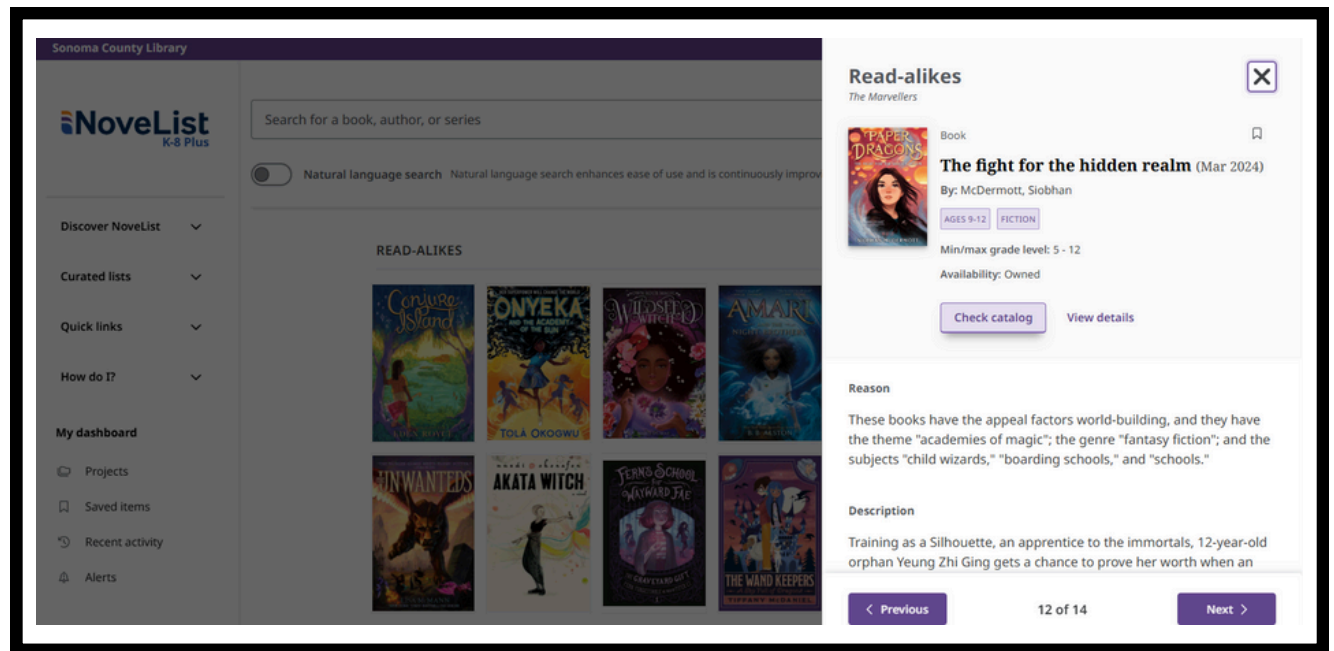
# STEP 6

Explore the list and pick a new book you'd like to read.



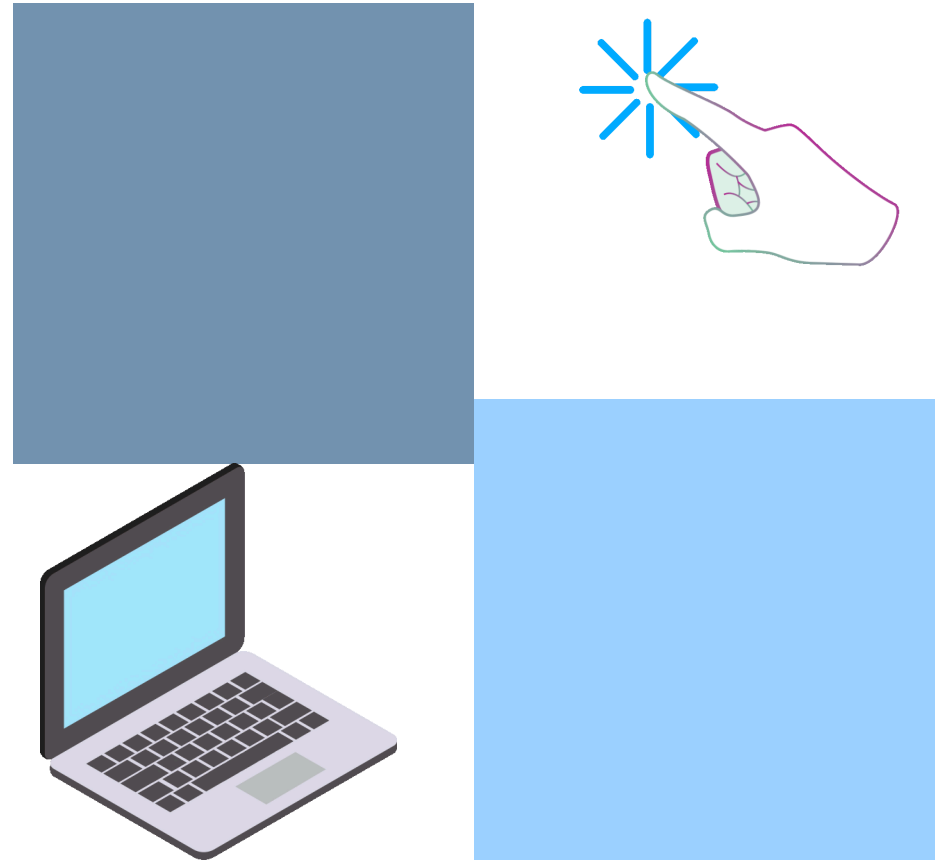
# STEP 7

Find out more about your new book or request it through the library catalog.



# STEP 8

Make using  
**NoveList**  
K-8 Plus  
a habit!



# THANK YOU



# LIBRARIES ARE FOR EVERYONE



Sonoma County Library | Your Partner in Education

